



# *Copper Beech Close*

*Ollerton*



Offers in Excess of £380,000

**(Chadwells**  
Estate & Letting Agents









*Rare Opportunity...*





*Copper Beech Close*

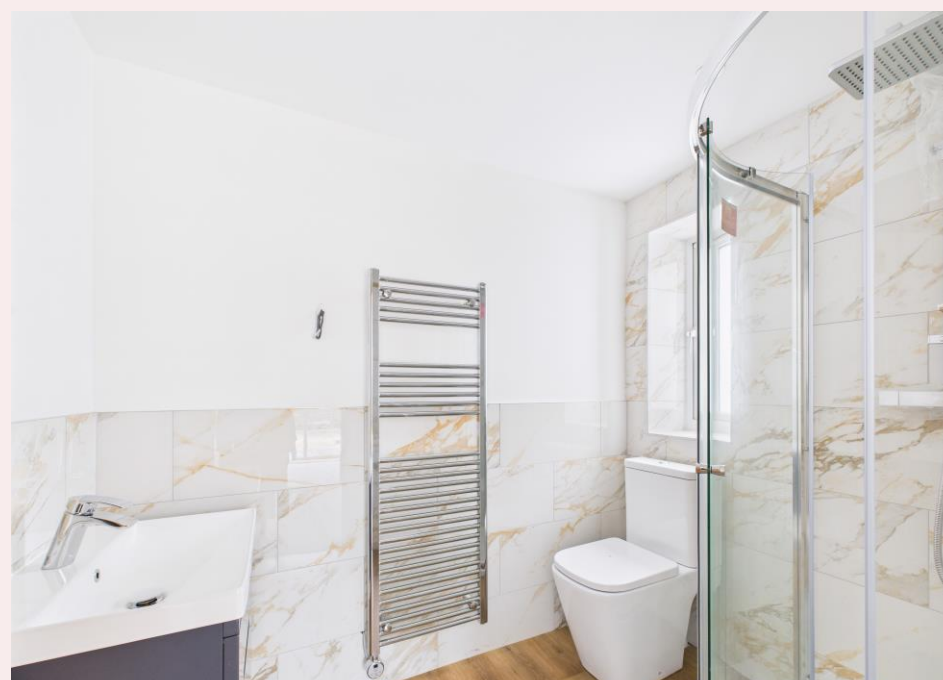






# *Welcome*

We are delighted to bring to the market this exclusive development! This unique development offers two luxurious three bedroom detached bungalows built on the outskirts of Ollerton. Internally the property will boast a spacious open plan living area with doors opening onto the rear garden, three generous bedrooms with the master benefitting from an en-suite, family bathroom and utility room. Not only will the internal have a lot to offer but externally you will not be disappointed with the private rear garden and allocated parking that comes with each plot. Contact our office today to register your interest and avoid missing out!



# Step inside...

## Entrance Hall

Accessed through a composite door and having LVT flooring, built in storage cupboard, ceiling spotlights and solid Oak doors to all internal rooms.

## Open Plan Living Space *15' 5" x 24' 6" (4.70m x 7.46m)*

The contemporary kitchen area is fitted with a range of wall and base units having Quartz work surfaces over inset with a stainless steel sink, and mixer tap. There is a matching breakfast bar which allows the perfect place to enjoy a morning coffee. Additional benefits in the kitchen include an integrated fridge freezer, dishwasher, ceramic hob with extractor over, eye level electric oven and separate microwave. As well as the modern fitted kitchen the open plan living space benefits from French doors opening onto the garden, ceiling spotlights, LVT flooring, TV, BT and Data points.

## Utility Room *4' 10" x 7' 1" (1.47m x 2.16m)*

Fitted with wall and base units having Quartz worksurfaces over inset with a stainless steel sink and mixer tap. Space and plumbing for a washing machine and tumble dryer, LVT flooring, ceiling spotlights and composite door to the side aspect giving direct access to the private drive.

## Master Bedroom *12' 10" x 9' 11" (3.91m x 3.02m)*

With carpet flooring, floor to ceiling window to the front aspect, pendant light fitting and TV point.

## En Suite *5' 3" x 7' 1" (1.60m x 2.16m)*

Fitted with a three piece suite comprising of shower cubicle with handheld and rainfall shower heads, wash basin set within a wall mounted vanity unit and low flush WC. LVT flooring, tiled splashbacks, chrome heated towel rail, obscure uPVC window to the side aspect and ceiling spotlights.

## Bedroom Two *10' 3" x 9' 8" (3.12m x 2.94m)*

With carpet flooring having underfloor heating, uPVC window to the front aspect, pendant light fitting and TV point.

## Bedroom Three *8' 11" x 9' 7" (2.72m x 2.92m)*

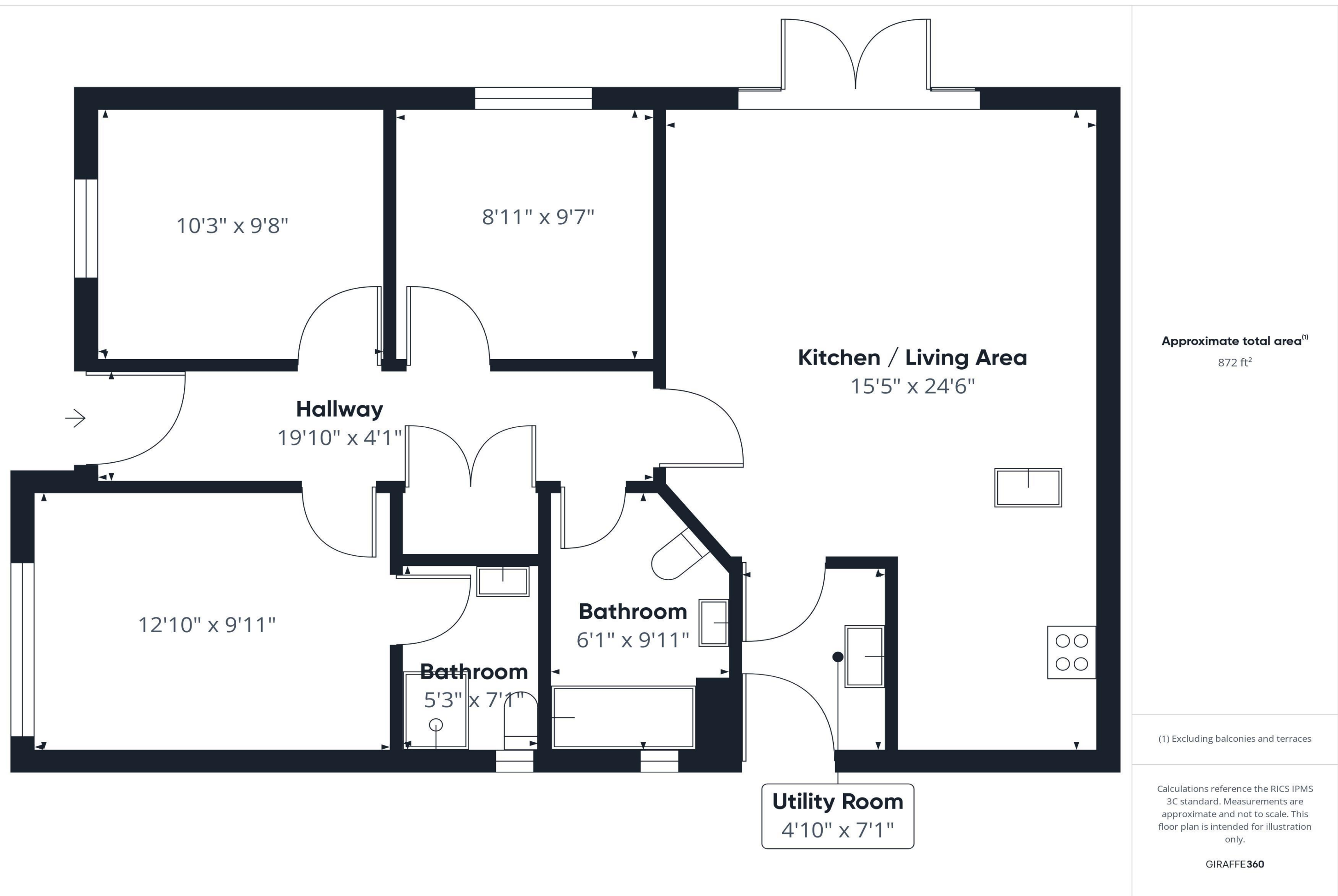
With carpet flooring, uPVC window to the side aspect, pendant light fitting and TV point.

## Bathroom *6' 1" x 9' 11" (1.85m x 3.02m)*

Fitted with a three piece suite comprising of bath with handheld and rainfall shower heads over, wash basin set in a wall mounted vanity unit and low flush WC. LVT flooring, obscure uPVC window to the side aspect, chrome heated towel rail, tiled splash backs, ceiling spotlights and underfloor heating.

## Externally

Accessed down a private road the property benefits from a private driveway to the side aspect and a garden which is mainly laid to lawn with a generous patio area and further benefits from an external power point and outside tap.









*Selling Homes with Bespoke Lifestyle Photography*

**Chadwells**  
Estate & Letting Agents



If you'd like to view this amazing  
property, give us a call.

We'd Love To Show You Around!

Telephone: 01623 861 861

 (Chadwells  
Estate & Letting Agents